



LTJG J. NICHOLAS

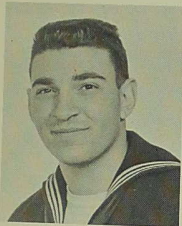


ENS N.W. KLORIG



CWO3 G.E. DERSHAM

**E**



J. J. ABOLAFIA



J. B. BAILARD



F. D. BEATY



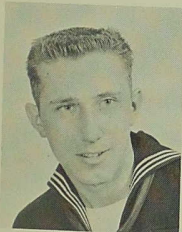
L. W. BEHL



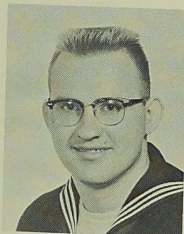
R. L. BISHOP



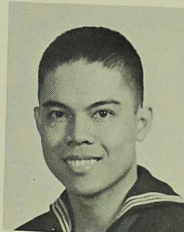
R. J. BOCCHINO



R. L. BOWEN



F. BROOKS



P. AMBROSIO,



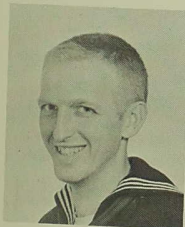
T. M. BROWN



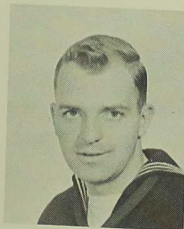
R. D. CAMPBELL



J. L. CARROLL



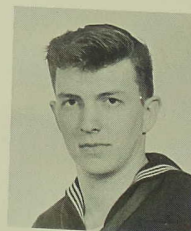
G. E. CHAMBERS



T. P. CLEARY



R. G. CLIFTON



J. A. CONNER



J. CROMPTON



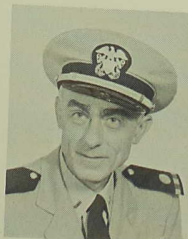
D.L.C. CROSBY



G. P. CURRAN



A. B. DAWKINS



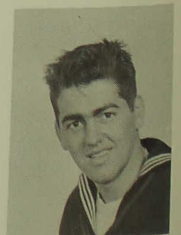
G. E. DERSHAM



D. J. DUNN



R. M. EFINGER



D. H. CARIGNAN

## Record Index

---

**Name:** G E Chambers

**Ship Name:** USS Wasp

**Ship Classification:** CVS-18

**Year Range:** 1960

## Source Information

---

**Record URL:** <http://search.ancestry.com/cgi-bin/sse.dll?h=4540627&db=NavyCruiseBooksIndex&indiv=try>

**Source Citation:** United States Navy. USS Wasp - CVS-18, 1960. Navy Department Library, Washington, D.C.

**Source Information:** Ancestry.com. *U.S. Navy Cruise Books Index, 1918-2009* [database on-line].

Provo, UT, USA: Ancestry.com Operations, Inc, 2011.

Original data: United States Navy. *Various U.S. Navy Cruise Books*. Navy Department Library, Washington, D.C.